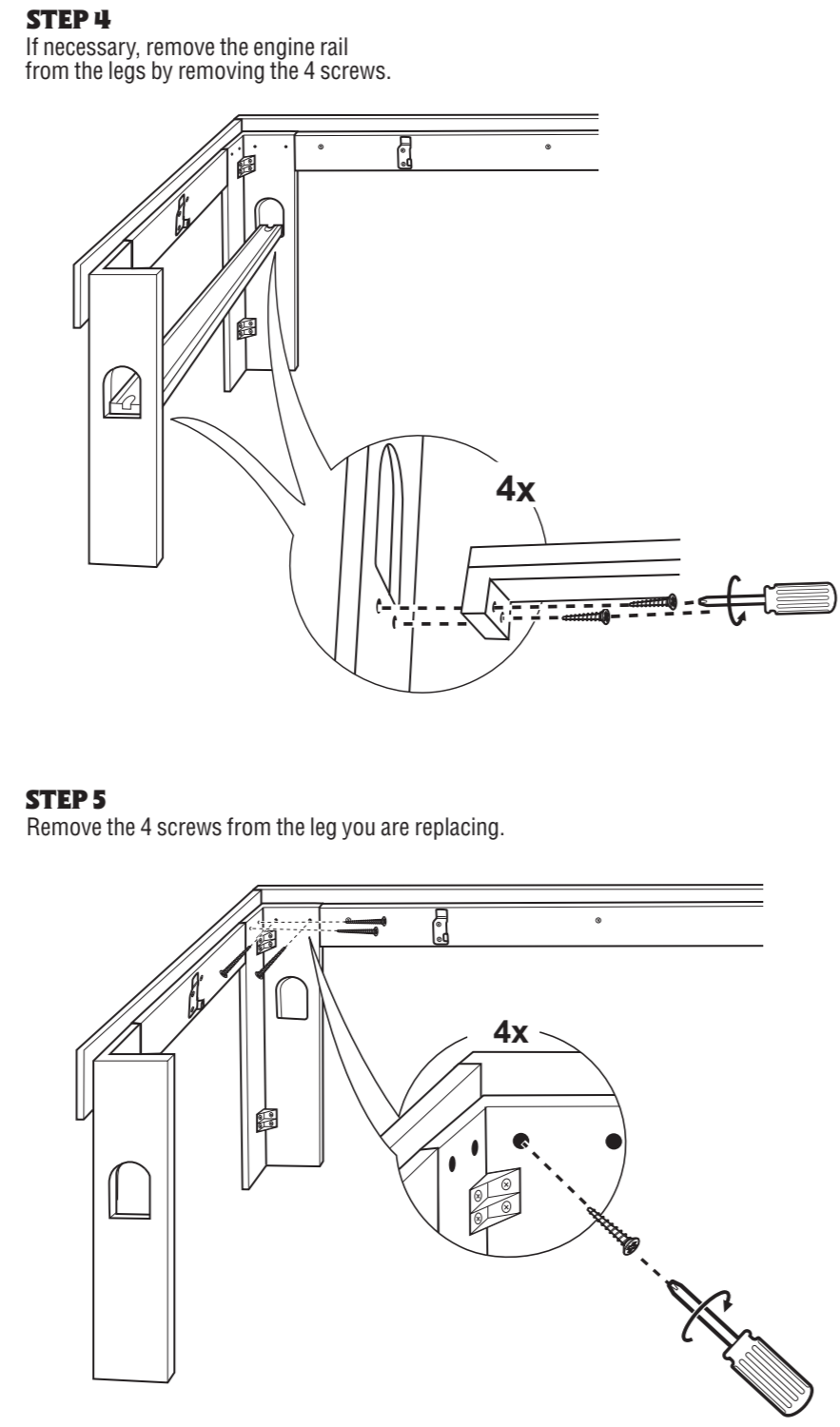
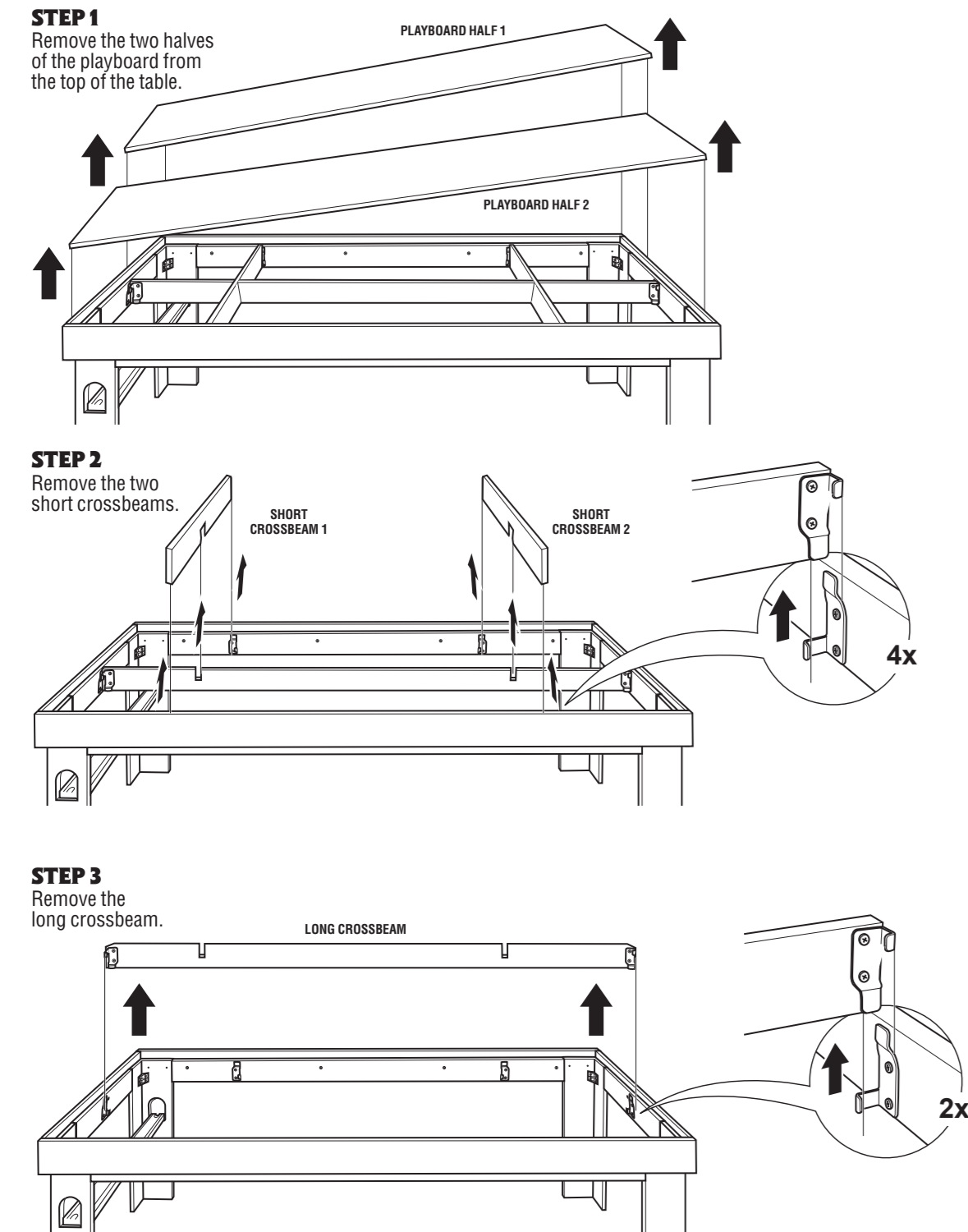


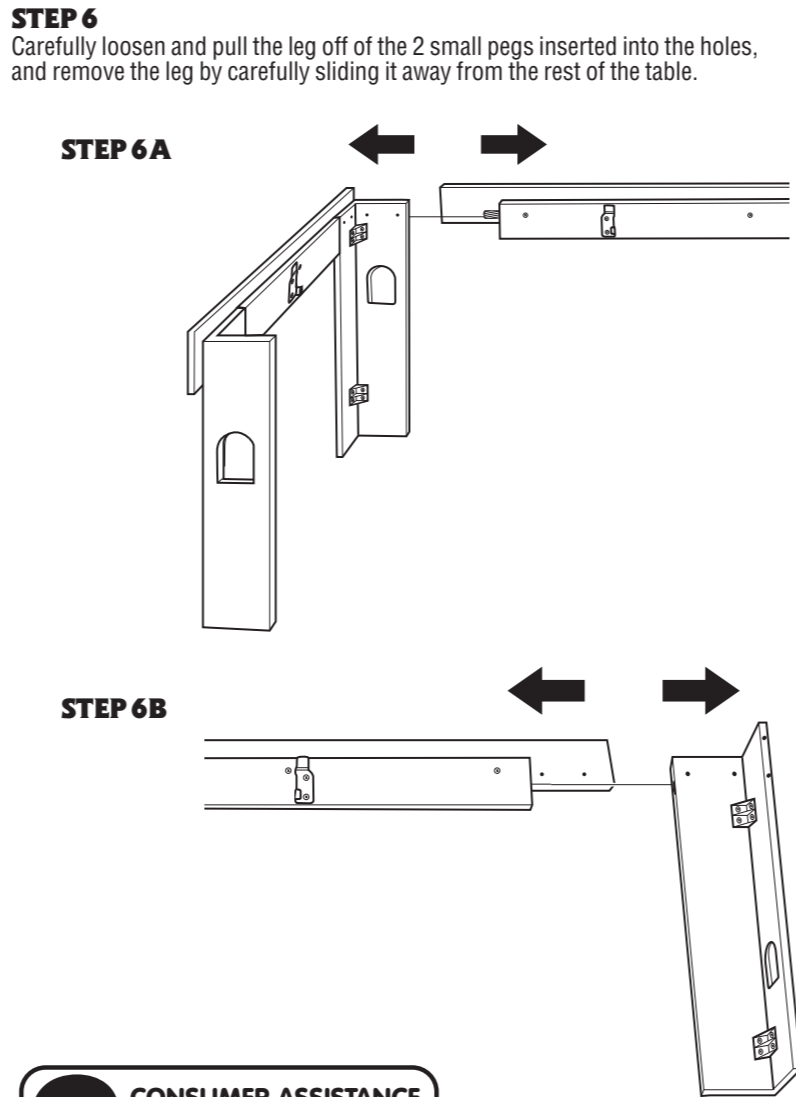
ISLAND of SODOR PLAYTABLE

Assembly Instructions

In order to replace one of the legs, you will first need to disassemble the playtable as follows:



The following instructions are provided to you in the event that you need to replace one of the legs on your Thomas and Friends Island of Sodor Playtable. Please keep these instructions for future reference as they contain important information.
Philips medium point screwdriver also required.
CAUTION: This package contains small parts. For adult assembly only.

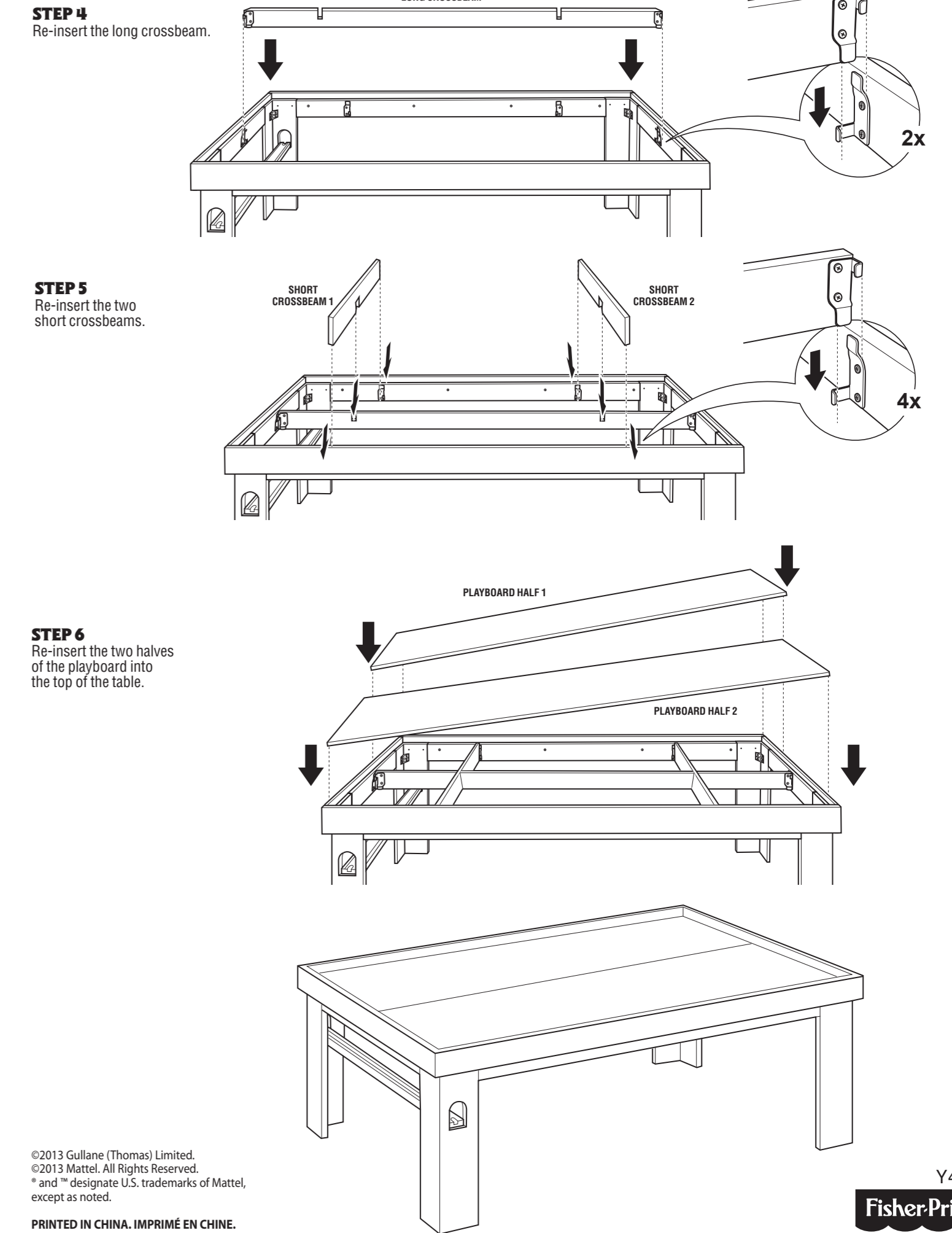
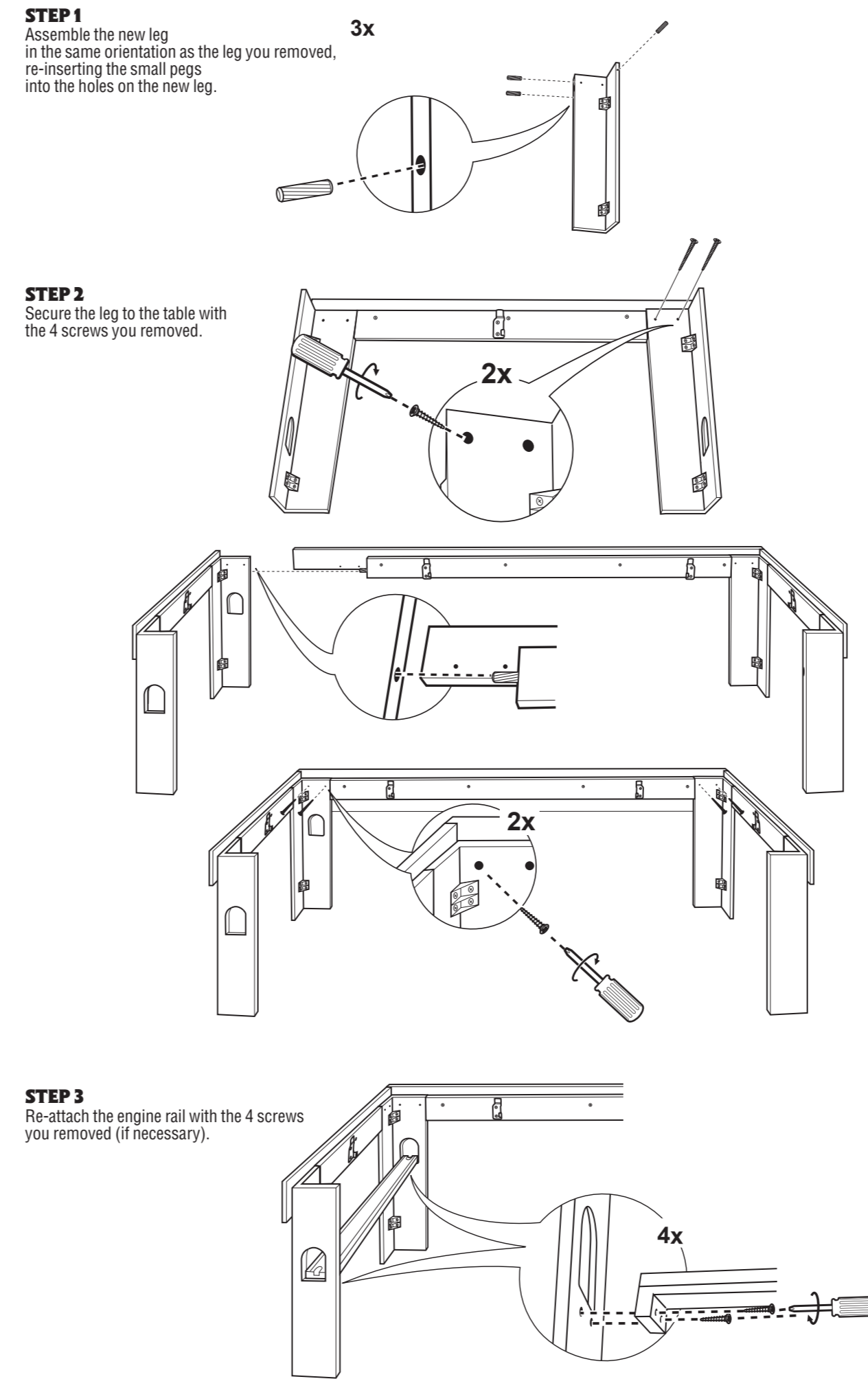


CONSUMER ASSISTANCE
 1-800-432-5437 (US & Canada)
 1-800-352-7470
service.fisher-price.com

Outside the United States:
 Canada: Mattel Canada Inc., 6155 Fremont Blvd., Mississauga, Ontario L5R 3R2; www.service.mattel.com
 Great Britain: Mattel UK Ltd, Vanwall Business Park, Maidenhead SL6 4UB. Helpline: 01628 500303; www.service.mattel.com/uk
 Mattel Europa B.V., Gondel 1, 1186 MJ Amstelveen, Nederland.
 Australia: Mattel Australia Pty. Ltd., 608 Church Street, Locked Bag #970, Richmond, Victoria 3121 Australia.
 New Zealand: 15-18 William Picking Drive, Albany 1331, Auckland.



You are now ready to assemble the new leg:



©2013 Gullane (Thomas) Limited.
 ©2013 Mattel. All Rights Reserved.
 * and ™ designate U.S. trademarks of Mattel, except as noted.
 PRINTED IN CHINA. IMPRIMÉ EN CHINE.



Item No : Y4412
 Version : E1
 Size : 16.5" x 11.5"
 Paper : Woodfree paper 70 gsm
 Color : Black
 Date :

FRONT PANEL

BACK PANEL